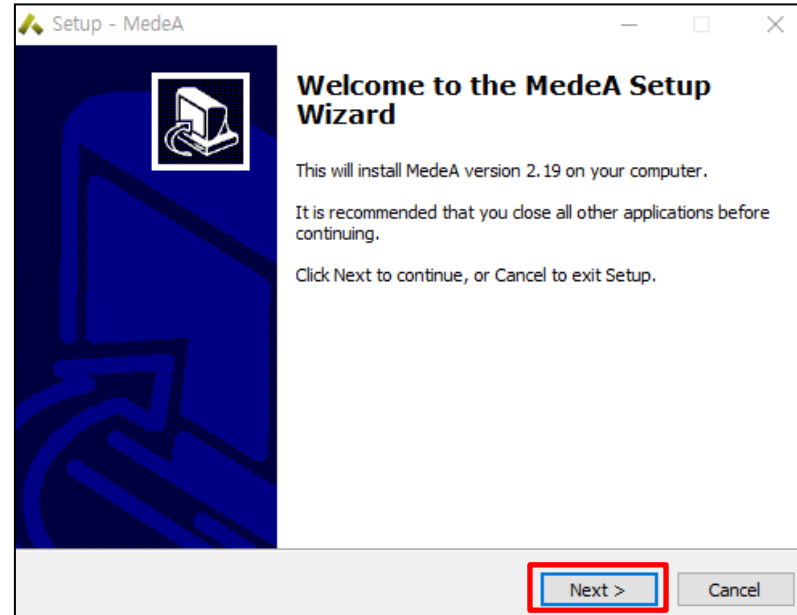
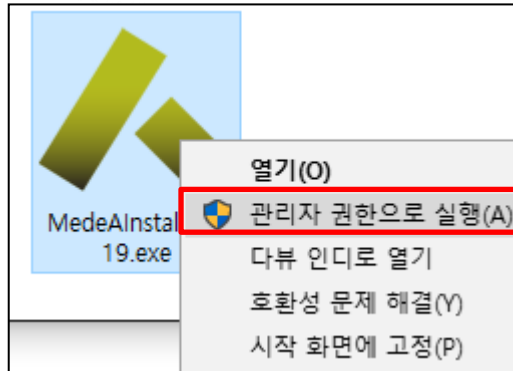


MedeA Installation Manual

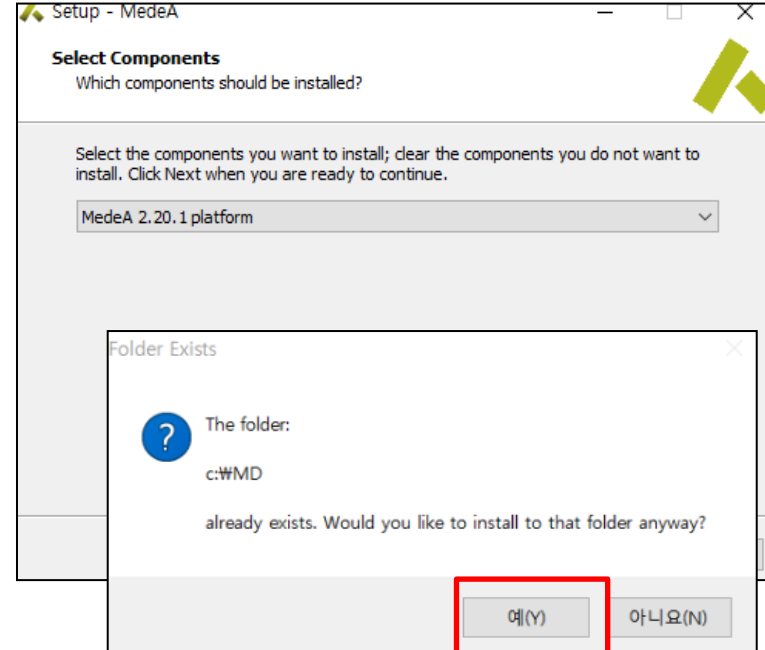
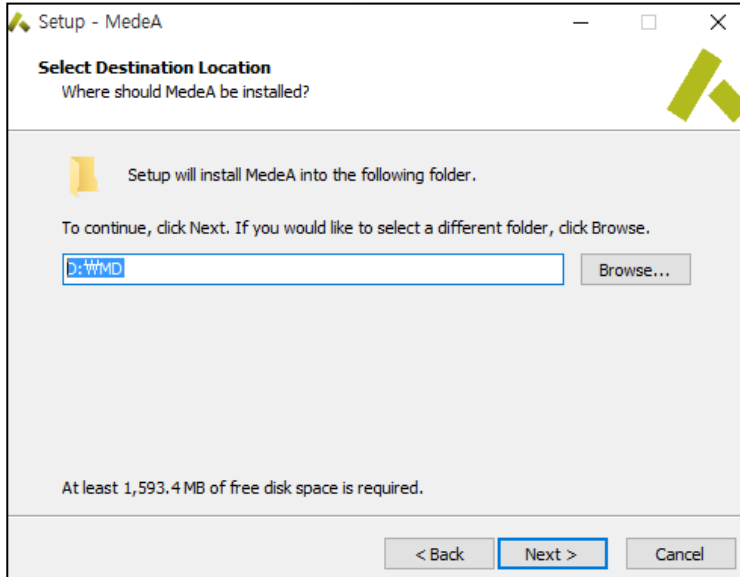
(Windows version)

(주)경원이앤씨

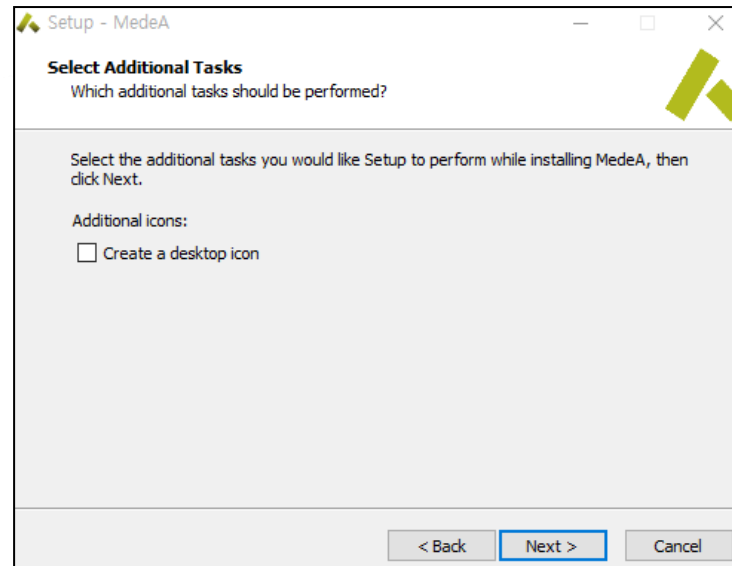
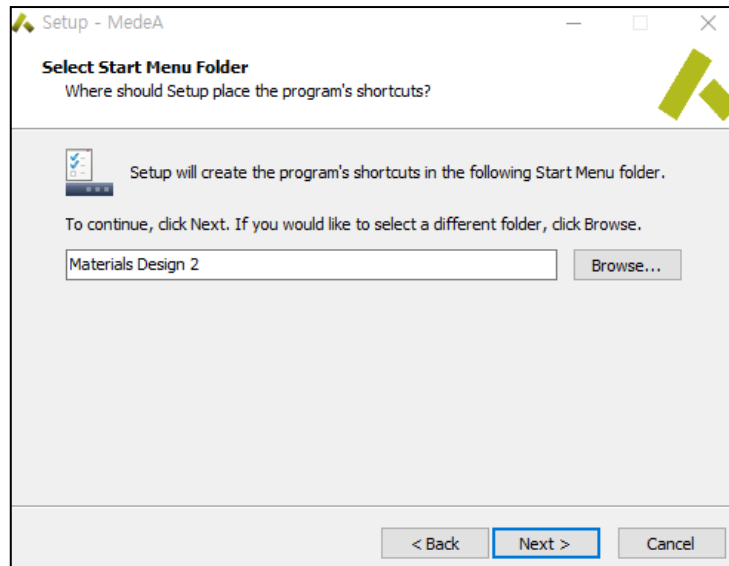
- MedeA installation
- JobServer/TaskServer 확인



- 설치파일 마우스 우클릭
- 관리자 권한 실행

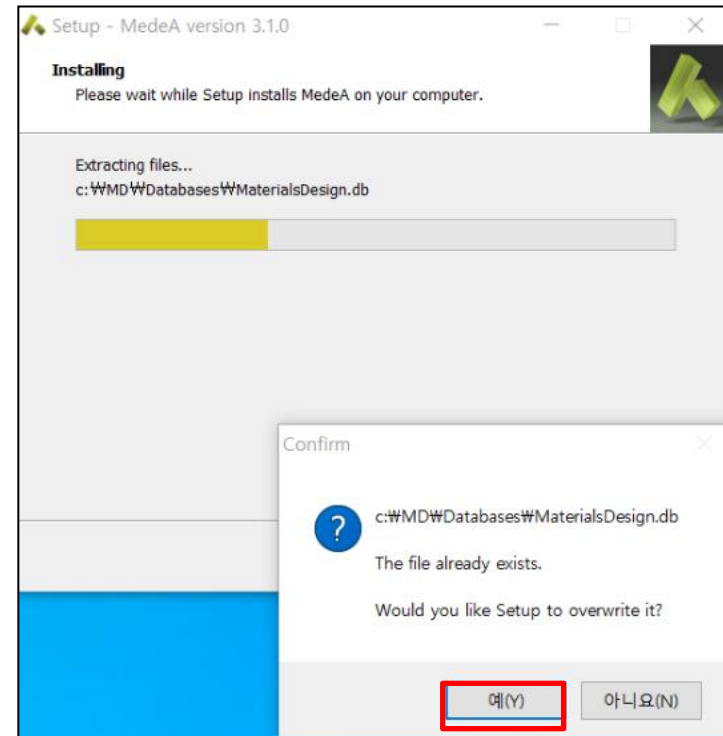
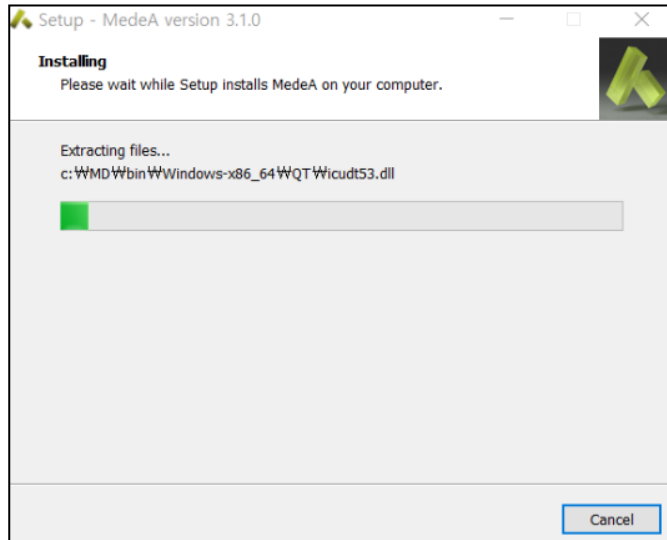


- 설치할 드라이버 지정
- 버전 업그레이드 시 기존 설치 경로에 설치 진행



- 설치폴더 및 바로 가기 icon 설정 후 Next

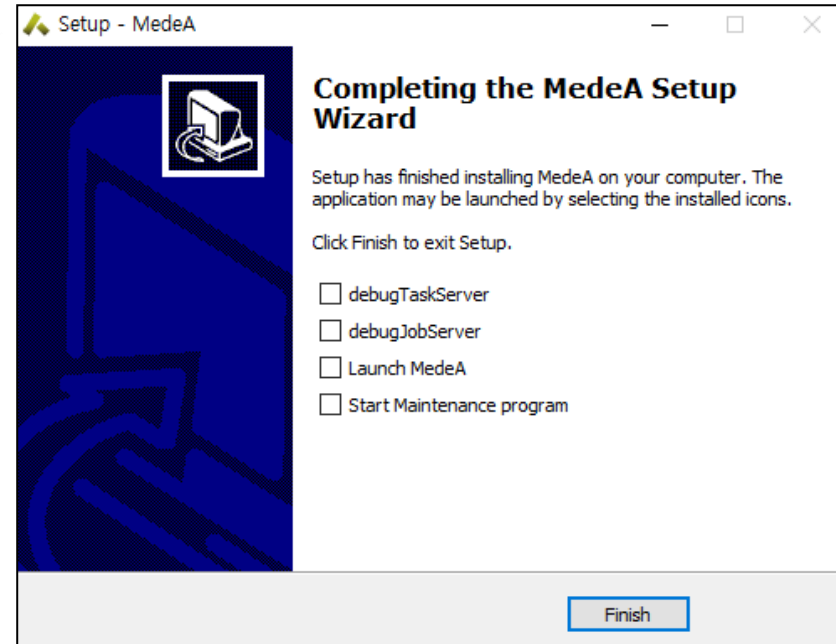
MedeA installation



- 처음 설치 시 Next 버튼 클릭
- 버전 업그레이드 시 DB overwrite 문구 허가

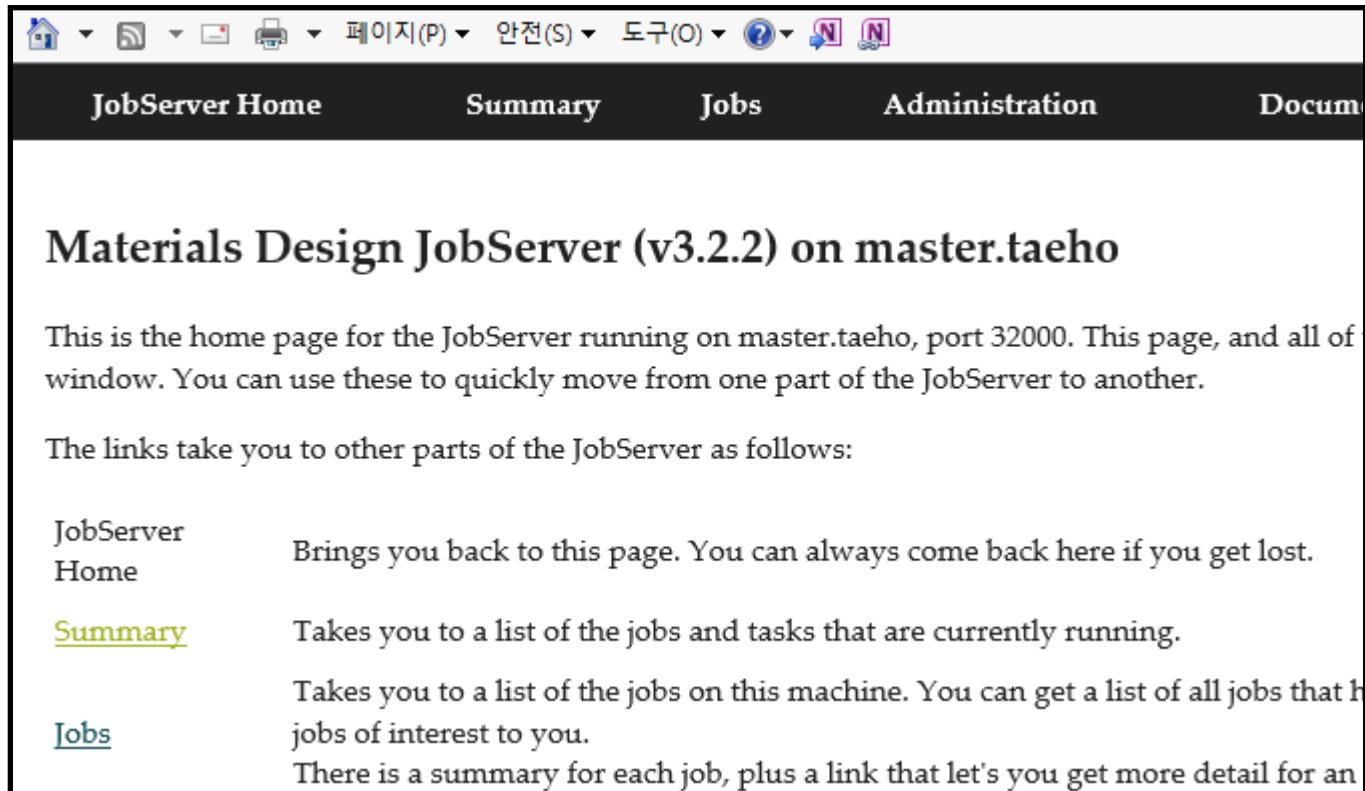
```

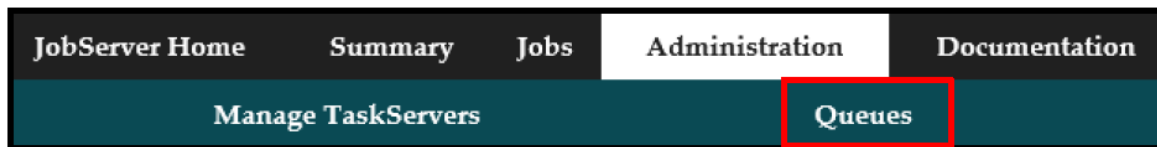
D:\MD\2.0\bin\Windows-x86\mdTaskServer.exe
Stopping after Initialization
[Mon Oct 26 17:28:09 JST 2015] [taskserver] [alert]      Installation directory:
D:/MD/2.0
[Mon Oct 26 17:28:09 JST 2015] [taskserver] [alert]      Starting the TaskServer
in directory 'D:/MD/2.0/TaskServer'
[Mon Oct 26 17:28:09 JST 2015] [taskserver] [alert]      Materials Design TaskSer
ver 2.18
[Mon Oct 26 17:28:09 JST 2015] [taskserver] [alert]      running on platf
orm intel/windows/windows nt/6.2
[Mon Oct 26 17:28:09 JST 2015] [taskserver] [alert]      pid = 6468
[Mon Oct 26 17:28:09 JST 2015] [taskserver] [alert]      Changed home directory t
o 'D:\MD\2.0\TaskServer'
[Mon Oct 26 17:28:09 JST 2015] [taskserver] [notice]    Https is available
[Mon Oct 26 17:28:10 JST 2015] [taskserver] [alert]      Working directory: D:/MD
/2.0/TaskServer
    
```



- 자동으로 Job/Taskserver를 실행시킴
- Cmd창은 자동실행 후 사라지며 이후 Finish 창 확인가능
- Finish 클릭하여 설치 완료
- Job/Taskserver 자동실행 중 방화벽 문구 발생 시 허용클릭

- 웹창에서 `http://localhost:32000` 입력
- 서버 활성화 확인





Queue	Description	Default Priority	Number of Cores	Number of Jobs	Is Active	Change?
local	On the job server machine	5	1	1	✓	Change
<input type="text"/>	<input type="text"/>	<input type="text" value="5"/>	<input type="text" value="1"/>	<input type="text" value="1"/>	<input checked="" type="checkbox"/>	Add Queue

- Number of Cores : 사용가능 Core 개수 입력
- Number of Jobs : 동시 계산 개수 입력
- 변경을 위해 Change 클릭

Change 를 클릭 하였을 경우

Item	Value
Queue	local
Description	On the job server machine
Default Priority	5
Number of Cores	1 ex: 8
Number of Jobs	1 ex: 4
Is Active	<input checked="" type="checkbox"/>
Change?	
Reset	Update

- Cores 및 Jobs 개수 수정
- Is Active 체크 후 Update



Queue	Description	Default Priority	Number of Cores	Number of Jobs	Is Active
local	On the job server machine	5	8	4	✓
<input type="text"/>	<input type="text"/>	<input type="text" value="5"/>	<input type="text" value="1"/>	<input type="text" value="1"/>	<input checked="" type="checkbox"/>

- UNCLE 사용 시 Number of Jobs의 개수를 2 이상으로 설정

http://localhost:23000/

인터넷 주소 창에 localhost:23000을 입력



[TaskServer Home](#)[Tasks](#)[Administration](#)

Materials Design TaskServer on kwenc-hp

This is the home page for the TaskServer running on kwenc-hp, port 23000. This page, and bars at the top and bottom of the window. You can use these to quickly move from one part of the site to another.

The links take you to other parts of the TaskServer as follows:

TaskServer Home	Brings you back to this page. You can always come back here if you get lost.
Tasks	Provides information on the tasks currently running. You can look at the task list, see the progress of the tasks, and see the results of the tasks. You can also start new tasks, and you can stop tasks that are running.
Administration	Allows you to administer this site. You can change the port, shut the TaskServer down, and you can change the user name and password.

There are no tasks running of 4 allowed.

Task server 활성화

- 실행 시 발생하는 정보창의 텍스트 형태로 복사
- 메일 송부
- 해당 라이선스 정보에 맞는 라이선스 발급

