

CFD-ACE+

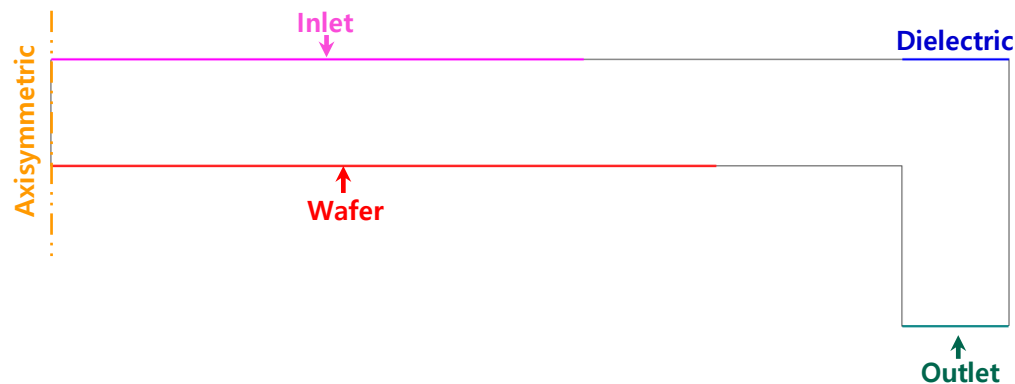
Wave Effects **KWEnC** 영향 확인

• 해석 형상 및 경계 조건

- 압력 : 2.9mTorr (3.866N/m^2)
- RF Source : 20MHz~150MHz / **100V**
- 유량 : 100 SCCM(Ar) \rightarrow 2D Axisymmetric 적용 = 15.92 SCCM

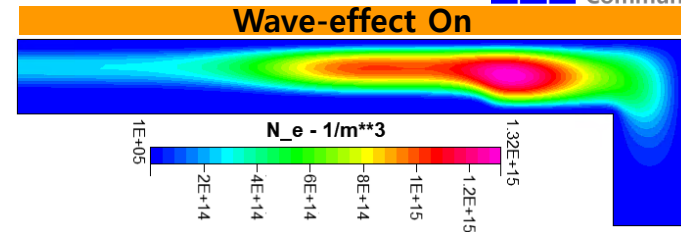
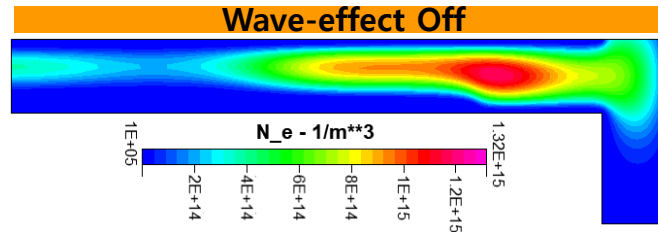
Reaction Steps						
No	Equation	Notes	Apf	nf	mf	(Ea/R)f
1	$\text{AR} + \text{E} \rightarrow \text{AR} + 2\text{E}$	ref. JILA	0	0	0	0
2	$\text{AR} + \text{E} \rightarrow \text{AR}^+ + \text{E}$		$1.2\text{E}-14$	0	0	11.94
3	$\text{AR}^+ + \text{E} \rightarrow \text{AR} + 2\text{E}$		$3\text{E}-13$	0.1	0	5.22
4	$\text{AR} + \text{E} \rightarrow \text{AR} + \text{E}$	JILA	0	0	0	0

- Geometry

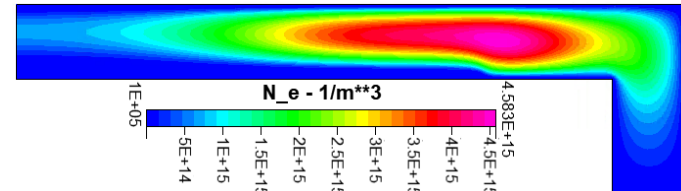
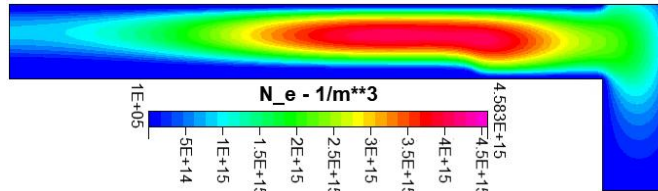


Wave effects On/Off 결과 비교 - Electron density

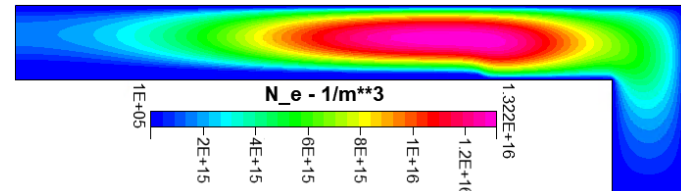
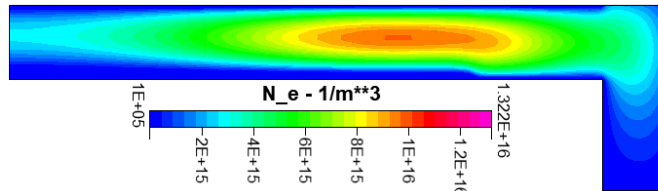
20MHz



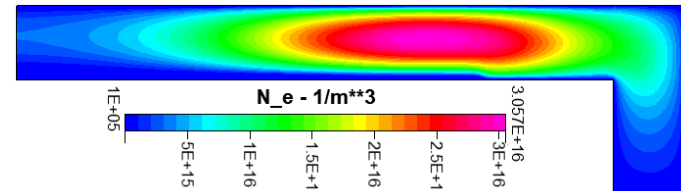
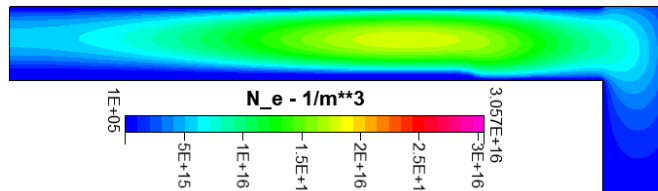
40MHz



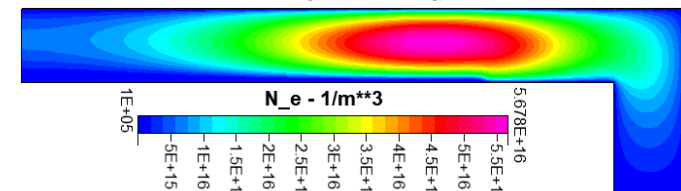
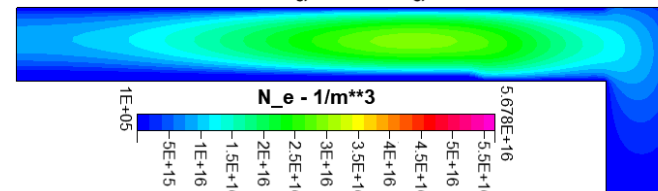
60MHz



80MHz



100MHz



150MHz

